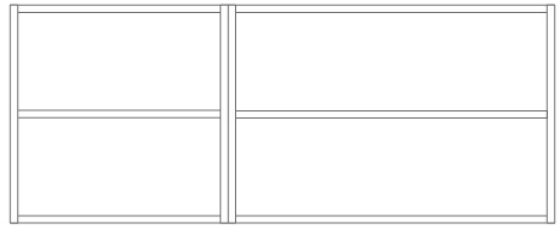
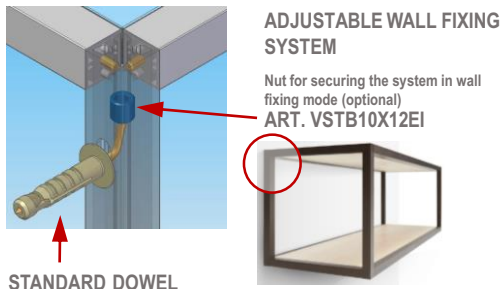
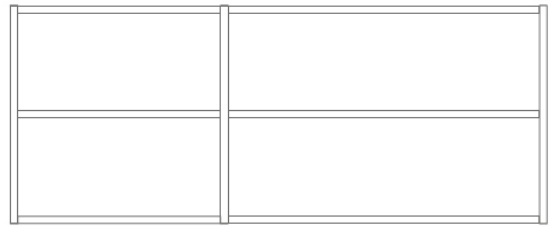


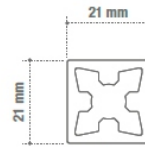
SPECIFICATIONS AND FEATURES



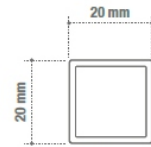
Combined modular units (double upright)



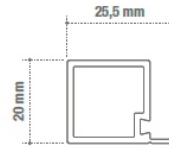
Standard size unit (single upright)



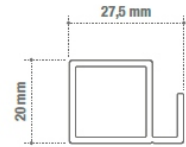
Upright
ART. 7711



Crossbeam
ART. 7712



Crossbeam for 19-mm thick shelf with gasket
ART. 7714



Crossbeam for glass shelf with gasket
ART. 7713



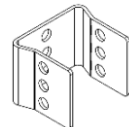
Joint
ART. CSA0010



Plastic cover
ART. CSP0224



Aluminium foot
ART. CLA0138



Template for drilling pattern
ART. CLF0061